



Practical information on WYD 2013 in Rio de Janeiro

Msgr. Joel Portella Amado
Executive Director
WYD 2013 Local Organizing Committee

1. Those responsible for the preparation and organization of WYD Rio 2013 will have to consider two aspects that are specific to Brazil:
 - 1.1 Brazil is a country that extends over a huge geographic area, and this means that distances can be very long. This fact will directly influence the Days in the Dioceses that in this WYD will be called *Missionary Week*.
 - 1.2 Our federal system with its three levels of government, and the need to navigate these levels, means that sometimes the process of preparation can be slowed down.
2. The city of Rio de Janeiro, the capital of a state with the same name, is experiencing what we can call a moment of peacemaking and development.
 - 2.1 In past decades, the city experienced high levels of violence. This was the result of the reduced role of the State and the presence of organized crime, especially in the poorer areas.
 - 2.2 In recent years, we are seeing efforts being made by the government and civil society in general to bring an atmosphere of peace to the city. This peacemaking should be understood not only as a reduction in the levels of violence, but also as a joint effort by diverse sections of society to bring about, for example, improvements to the job market, investments in the areas of health and transportation, etc.
 - 2.3 Today, the city of Rio de Janeiro is benefiting from a substantial amount of public investment that makes it possible, in the short-term at least, to see significant improvement in the quality of life of its residents and, of course, that of visitors as well.
 - 2.4 Another sign of change in the city of Rio de Janeiro has to do with the political alignment of the three levels of government. As Brazil is a federated republic, government exists on the federal, state and municipal levels. The city of Rio de Janeiro had endured, for decades, conflicts among these levels of government, and these have had obvious effects for the city.



3. With regard to the Church in Brazil, the Church in Rio de Janeiro has been following the conclusions of the Conference of Aparecida, the General Directives for Evangelization in the Brazilian Church and the 11th Pastoral Plan of the Archdiocese of Rio. At present there is a strong missionary awareness, and there are good relations with civil society in general and with the three levels of government. Of course, this is not a matter of unanimity in relation to civil society nor of subservience to state power, but rather the recognition that the mission in our time necessarily involves the active presence of the different areas of the life of the city, in an attitude of dialog, proclamation and solidarity.
4. It is because of this revitalization that the city of Rio de Janeiro has been chosen to host big events.
 - 4.1 Rio de Janeiro has somehow always been characterized by big events. Some already make up part of the life of the city and occur annually: *Carnaval*, *Reveillon*, etc. Others are one-time, specific events that select a city to host them: sporting events (PAN 2007, Military Games 2011, World Cup 2014, Olympics 2016), artistic events (Rock in Rio) or those having a more social outlook (Rio+20).
 - 4.2 It is interesting to observe the rediscovery of street carnivals. In the worst period of the life of the city, this kind of cultural celebration disappeared. Now, with the revitalization of the city, *Carnaval* has returned to the streets; and in some neighborhoods, one can already detect a family atmosphere in this popular celebration.
5. In this sense, we can say that WYD Rio 2013 fits perfectly into the Rio de Janeiro of today, and the Rio de Janeiro of today will see its current historical moment catalyzed, made greater by WYD Rio 2013.
6. We are not trying to depict Rio de Janeiro as the best city in the world. Rio de Janeiro is a city like any other city with more than five million people (Rio has more than six million).
 - 6.1 Rio de Janeiro also faces problems like a very unsatisfactory distribution of wealth, growing poverty, unemployment and insufficient housing, basic sanitation at undesirably low levels and environmental challenges.
 - 6.2 The difference is that, today, Rio de Janeiro is doing something for itself.
7. One point deserves to be highlighted because several decisions and directions for WYD Rio 2013 depend on it:
 - 7.1 Certain big events are receiving special treatment from Brazilian authorities. With the World Cup as the leader, these events are bringing about special legislation in Brazil which is



known as *World Cup General Law*. This Law was approved on March 28th by Congress and is now going to the Senate, since Brazil follows a bicameral system. Later, it will have to be approved by the President of the Republic.

7.2 WYD Rio 2013 is interested in the regulation of these big events and in getting WYD on the list of these events as well. WYD is not interested in all the aspects connected to sporting events, such as ticket sales or permissions for alcoholic beverages in stadiums. WYD Rio 2013 is interested in those aspects tied to visas and volunteers, as will be shown below.

8. WYD Rio 2013 Geography:

8.1 The headquarters and centre of activity will be the city of Rio de Janeiro. Rio de Janeiro city limits and those of the Archdiocese of Rio de Janeiro are identical: one city, one diocese.

8.2 Nevertheless, all big cities tend to spread, and WYD Rio 2013 will have three sub-centers:

- Archdiocese of Niterói (Downtown)
- Diocese of Nova Iguaçu
- Diocese of Duque de Caxias

9. The preparation of WYD Rio 2013 started on August 21, 2011, when the Holy Father declared that Rio de Janeiro would host the next WYD.

9.1 This period of time has some peculiarities:

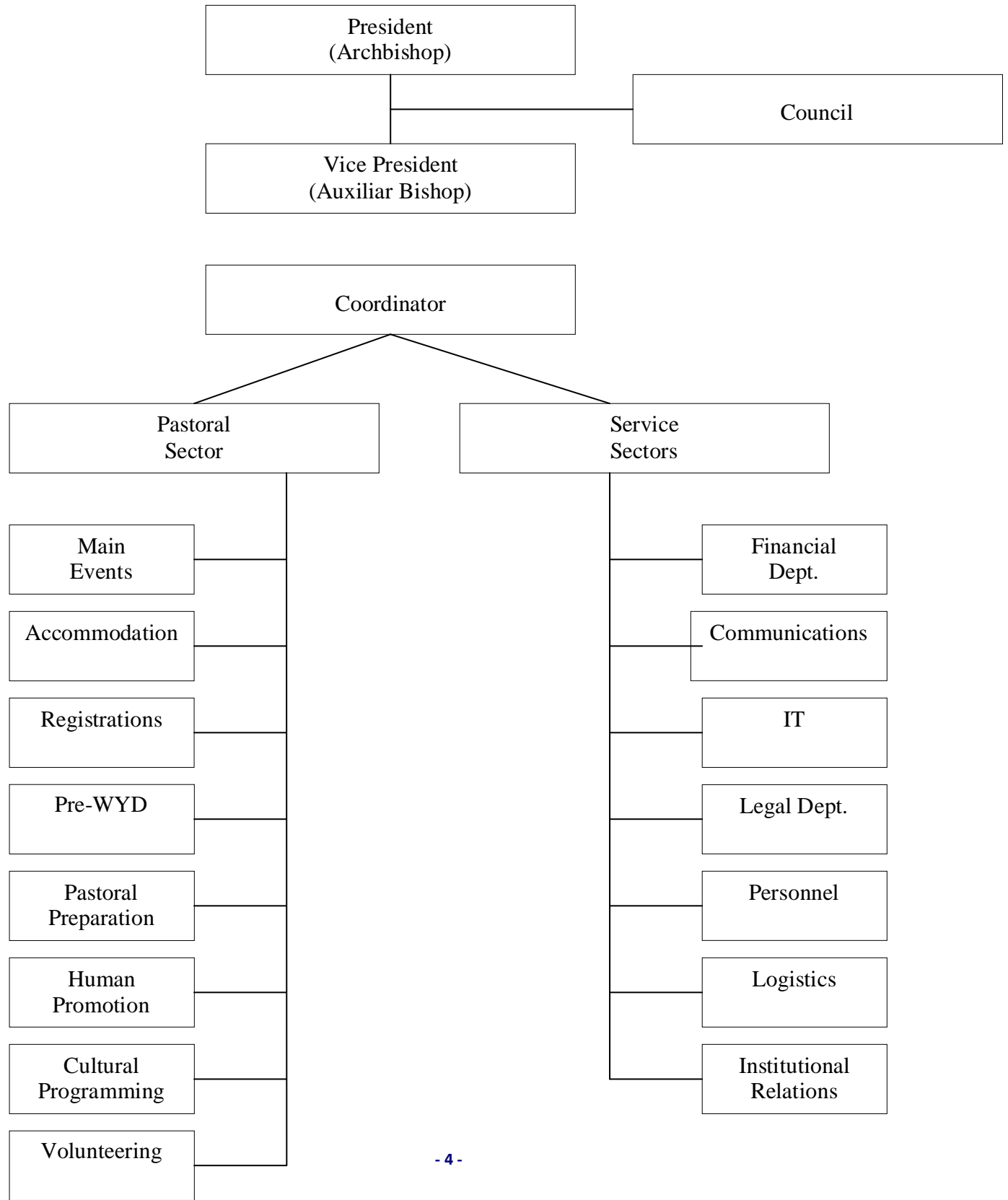
- The time between the announcement and WYD Rio 2013 is short.
- The country is big.
- Legal process sometimes has to pass through all three aforementioned governmental spheres.

9.2 For this reason, the Cross and Icon were handed over to the Brazilian youth at WYD in Madrid. We are witnessing how much good is taking place during the pilgrimage of the cross and icon all over the country meeting youth and the not-so-young, going to all kinds of places.

10. The Rio LOC (Local Organizing Committee) is organized in the following way:

10.1 We follow the directives contained in the Operational Memo of the PCL and also the experience of Madrid.

10.2 We have adapted these to our reality, seeking always to emphasize the pastoral dimension of each sector, even the ones that can seem to be more strictly technical.





11. The preparation for WYD Rio 2013 in the Archdiocese of Rio de Janeiro has included these steps:
 - 11.1 The strengthening of the Youth Section: diverse ways of living the Faith.
 - 11.2 A vigil every second Friday of the month at the National Adoration Sanctuary, with young people coming even from outside the city and live feed, for example, to Portugal. Join this vigil at: www.rio2013.com.
 - 11.3 Production of information materials on various levels: printed text, text for the website.
 - 11.4 We are waiting for the Holy Father's message for WYD Rio 2013 to include it in these materials. When it comes, we will be able to write reflections for the youth and make these texts available on the WYD website as well.
 - 11.5 The WYD Rio 2013 prayer will be ready by Easter.
 - 11.6 The theme song should be ready in July:
 - The delay, in these cases, of the prayer and song, is because of young people's desire to participate. The same thing happened with the WYD Rio 2013 logo.
 - For the song, we have almost 180 applicants. The Pastoral Preparation Sector can tell you what we are doing so that you can tell us if we are on the right track.
 - 11.7 During the course of the preparation, we are going to have three *simulations*, in other words, three events directly connected to some aspect of WYD.
 - The first of these will happen on May 19. It will be a kind of catechesis rehearsal. There will be approximately 35 locations where, on a Saturday morning, parishes, movements and other associations will come together to experience each step of a catechesis. This experience is intended not only for young people but for all age groups. That is because WYD Rio 2013 is directed toward young people, but not limited to them. We want to see how we are doing, primarily in terms of local organization and transportation.
 - The second event will take place on July 20-22, one year before WYD Rio 2013. It will be an event where various WYD Rio 2013 activities will happen, though on a much smaller scale. With this event we want to evaluate how the structures planned by the LOC will work at the moment when they all need to function together.
 - The third event will be the next Delegates' Meeting, which will take place in November. We want to evaluate the participation of the volunteers, their capacity to work together and their initiative and creativity, as well as other aspects of urban mobility.
12. The Main Events:
 - 12.1 We have places in mind, all in the city of Rio de Janeiro, where these events will happen. In choosing them, we have considered many possibilities. None was discarded. We heard from



authorities from the three levels of government and also from specialists in many different fields. We arrived, then, at a conclusion. The members of the Pontifical Council for the Laity, who came to Rio de Janeiro at the beginning of this month, visited some of these places. However, we unfortunately are not yet able to officially reveal the places where these events will take place. The main reason rests in the fact that the areas selected have owners or managers that have yet to agree definitively. We believe that this will happen in the next sixty days. The negotiations are near the end. We have the initial approval, but this alone is not enough.

12.2 Another reason has to do with the effect that the use of certain spaces will have on the lives of those who live nearby. These people will have to be properly informed, and we will have to work together to find solutions that satisfy everyone.

13. Special Events have already been finalized in the same way but depend on the approval of the bodies directly connected to the Holy Father. For us, *special events* are:

13.1 Those that will happen in the presence of the Holy Father and that are an integral part of WYD Rio 2013.

13.2 Those that, even without the presence of the Holy Father, will involve a huge number of people or will have a significant impact on WYD Rio 2013.

14. Cultural Events:

14.1 Approximately 25 stages will be made available, spread throughout the city center and sub-centers.

14.2 Each stage will have a basic light and sound system.

14.3 All countries and movements wishing to take part can use this address to contact Cultural Events (Father Marcos and Gustavo Ribeiro): cultura@rio2013.com

15. Catecheses:

15.1 Churches are the first choice of location, but other kinds of facilities can also be used.

15.2 Organized according to language groups.

15.3 Every effort will be made to have lodging near to the catechesis venue.

15.4 We have mapped the whole Archdiocese by parishes, making each one a center that includes catechesis and lodging. Since the catecheses take place on three of the days and involve greater mobility than that of the Main and Special Events, and since Cultural Events



will happen in several parts of the city, there will have to be a reduction in urban mobility. Pilgrims themselves will only have to travel long distances at specific moments.

- 15.5 This is why it is so important that registrations be done as early as possible, supplying us with the data of language, age and gender.

16. Registration:

- 16.1 We are familiar with WYD and its organization, and we know how important numbers are, especially the number of pilgrims.
- 16.2 We work with some principles common to all WYDs:
- Coordination according to lodging, catecheses and languages
 - As everybody is a pilgrim, everyone will have to register.
- 16.3 Bishops will have a separate registration system, as at past WYDs.
- 16.4 Registration will be open next July, via the WYD website.
- 16.5 There will be two phases, as usual:
- General information
 - More specific information
 - It is quite important that at least the first phase of registration be done as early as possible. Considering geography and the way that the city is organized, it is very important to have the numbers, even if they are not definite, as soon as possible.
- 16.6 For WYD and Missionary Week (*Diocesan Days*), there will be, on the registration page, an item through which pilgrims can select a place for Missionary Week and request more specific information.
- 16.7 Groups can be organized in whatever number they wish. For the organization of WYD Rio 2013, with respect to the language-catechesis-lodging centers, sub-groups of 50 pilgrims will be organized. The system will permit the registration of any number of pilgrims, but you must know that for every 50 pilgrims it will be necessary to open a new sub-group.
- 16.8 The reason for this option has to do with taking better care of the pilgrims and the organization of lodging, according to the geography of the city.
- 16.9 Each group and sub-group has to designate a leader, as usual, and also a sub-leader, so that we always have a contact person in case of emergency. This leader/sub-leader pair should be composed of a male and a female if possible.



17. Packages:

17.1 In the organization of the packages, we will not depart from prior WYD thinking.

17.2 There will be three kinds of packages:

- Complete: those from July 23 to 28 (Tuesday to Sunday);
- Weekend: including the Way of the Cross, Vigil and Sending forth Mass;
- Only the Vigil and Sending forth Mass.

17.3 Each package, as usual, will give a pilgrim kit containing, for example:

- Prayer material
- Maps
- WYD Rio 2013 agenda
- Transportation and food tips, etc.

18. Visas:

18.1 Prior visa: Brazil follows the principle of Reciprocity. If a country requires a visa for Brazilians to enter, the same will happen with Brazil in relation to those who have passports issued by those countries. In this way, each pilgrim will have to verify their country's process in relation to the entry of Brazilians.

18.2 There are only 32 countries in which Brazil has no diplomatic representation. In such a case, the pilgrim should seek the nearest Embassy or Consular Service.

18.3 In accordance with World Cup General Law (see above item 7.1), there will be different treatment for the visas of those who are going to participate in big events. Two aspects are important for pilgrims:

- Accreditation, that is, a way to identify a pilgrim to ensure that he/she does not have a previously denied or expired visa that would result in their not gaining entry into Brazil;
- Fees

18.4 As pertains to accreditation, the Brazilian Ministry of Foreign Affairs has issued the following directive:

- All pilgrims will need a document indicating their participation in WYD Rio 2013.
- There will be a template form prepared by Brazilian authorities. This form will have to be completed at the end of the registration process and presented to the corresponding consular authority.



- The Brazilian immigration department, while it will simply require this single identification document, will only accept individual documents.
 - This document will have to be confirmed by some ecclesial authority of the country of origin (Nunciature, Episcopal Conference, Diocesan Bishop, etc.).
 - It is required that this document have a photo of the pilgrim. We are trying to show the immigration authorities that a photo is actually not necessary, as the pilgrim's name and passport information are sufficient. Nevertheless, as of this time we have not yet managed to convince the immigration authorities.
- 18.5 This accreditation document will serve both for a prior visa being obtained in Brazilian consulate offices and for authorization for entry into Brazilian territory.
- 18.6 Each pilgrim must carry this accreditation document at all times. This will avoid the possibility of immigration officials having to use their discretion to authorize or deny entry into Brazil.
- 18.7 We warn that, for countries that need a prior visa, or in other words, for countries where visas should be previously stamped by a Brazilian consulate office, there will be no visa granted at the moment of entry into Brazil. Brazilian Law, in these cases, is very strict: it requires immediate return to country of origin and a fine imposed on the airline. For this reason, it is important that each pilgrim verify whether between his country and Brazil a prior visa is required, based on the principle of Reciprocity.
- 18.8 Pay attention also to those who live in one country, but are citizens and consequently have a passport of a different country. This pertains especially to priests, missionaries and religious. The important thing is not the country from which the pilgrim is coming, but rather the country where the passport was issued. This is international law.
- 18.9 To travel around Rio de Janeiro, immigration authorities recommend that you have a copy of the identification page of your passport and, if a visa was stamped, also this page of your passport. Together with these copies, carry your accreditation document with you at all times. These two documents will be checked.
- 18.10 With respect to a fee for the issue of a passport, Brazilian law prohibits the forgoing of revenue; in other words, the government cannot waive a fee required by law to the detriment of public funds. As of this moment, we can only say that it will not be possible to obtain a fee exemption. It is also important to pay attention in countries where, besides the visa fee, a local service fee is charged, too. Brazil, by reciprocity, will also charge this fee and will not waive it.

19. Vaccination:

- 19.1 Brazil does not require vaccinations for entry into its territory.



- 19.2 However, pilgrims should note the vaccinations required by their own country for people entering from Brazil, because, on their return home, pilgrims take the risk of not being allowed to enter back into their own country.
- 19.3 In the case of Brazil, there is a situation that, although it is not a legal requirement, it is strongly recommended: Yellow Fever vaccination, observing a period of 15 (fifteen, not fewer!) days before entry into the country. This observation pertains especially to those who will participate in Missionary Week in the interior of the country, but also to those who will come to participate just in WYD Rio 2013.

20. Lodging:

- 20.1 Three types:
- Hotels
 - Family homes: at this moment, a lodging campaign is underway
 - Schools / parish premises, etc.
- 20.2 Hotels: Rio de Janeiro's hotel capacity is not enough to accommodate all pilgrims.
- 20.3 There are two other options that fit very well into the spirit of the WYD pilgrimage: families and schools/ parish premises (simple accommodation).
- 20.4 Each parish of the Archdiocese of Rio de Janeiro and other sub-centers is considered a lodging and catechesis center.
- 20.5 Rio de Janeiro has a beautiful history of family hospitality: the Pope's visits since 1980. The last one in 1997 was a lovely experience of hospitality. Many friendships have lasted even until now.
- 20.6 For lodging, males and females will be in separate accommodation, even if they are married.

21. Food:

- 21.1 Double system: tickets and *kits* (picnic bags).
- 21.2 Tickets: until the vigil, the pilgrim will be able to have meals at accredited locations. We are working to get the largest number of accredited places possible.
- 21.3 Vigil and Sending forth Mass: *kits* (containing balanced meals).



22. Transportation:

- 22.1 The city of Rio de Janeiro is a rectangle surrounded by sea and mountains. In the city, there are two big rocks and this geography affects the transportation system.
- 22.2 Today the city is organized according to *arteries* where most of the traffic passes. Transportation is one area receiving a significant amount of investment these days.
- 22.3 For transportation during WYD Rio 2013, one of two systems will be decided: a single ticket which is read on each trip, or tickets that are detached on each trip.
- 22.4 There has been no clear decision yet because, in Rio de Janeiro, the transportation system is a private company. A lot of negotiation is needed in order to convince them that WYD is not an opportunity to turn a profit. Government authorities help but cannot directly interfere.

23. The whole complex of situations will be managed by the Operations Center of the City of Rio de Janeiro.

- 23.1 The Operations Center looks like those of other big cities, with the difference that it is able to manage multiple situations simultaneously. It is not just a center, for example, for traffic or power outages or weather forecasts. The Operations Center is equipped for all these situations and is ready to be deployed at the moment they happen.
- 23.2 A big test for this Operations Center was when President Obama visited Rio. It was from there that the Brazilian security service and CIA controlled everything.
- 23.3 During their visit to Rio de Janeiro, the PCL visited this center.

24. Communications:

- 24.1 The Communications Sector has already been working since the first moment Rio de Janeiro was chosen to host WYD.
- 24.2 We have the website: www.rio2013.com
- 24.3 Today our website is in Portuguese, English and Spanish but will have translations for other languages soon.
- 24.4 We are working on some applications: WYD Rio 2013 data count, Pilgrim Guide (in the city of Rio de Janeiro according to the WYD Rio 2013 agenda) and Follow the Cross, which allows us to follow the cross and the icon.



25. Volunteering:

- 25.1 Brazilian law is pretty restrictive in relation to volunteer work, be it by Brazilians or foreigners. To be able to receive international volunteers, we are waiting for WYD Rio 2013 to be placed in the big event category (see item 7.1).
- 25.2 If you want more information about volunteering, contact: volunt@rio2013.com

26. Legacy:

- 26.1 We know that nobody can be the same after a WYD. For this reason, we highlight that the first great legacy is the witness that it is possible to live according to the Gospel and be a normal, healthy person. Not an alien.
- 26.2 Besides this legacy, WYD Rio 2013 wants to leave three more legacies:
 - Pastoral: a Youth Institute in which the first undertaking will be a Guide for Young Missionary Disciples.
 - Human Promotion: For Catholic or non-Catholic youth, the love of Jesus Christ as a force for the prevention of and recovery from drug abuse.
 - Environment: We are starting to think about a WYD consistent with current environmental awareness. We need to take many steps forward in this area, but we are happy and excited about this possibility.